

PART OF THE NW.1/4, OF SECTION 21, T.6N., R.2W., S.L.B. & M.

813

ROPELATO ESTATES SUBDIVISION

IN WEBER COUNTY

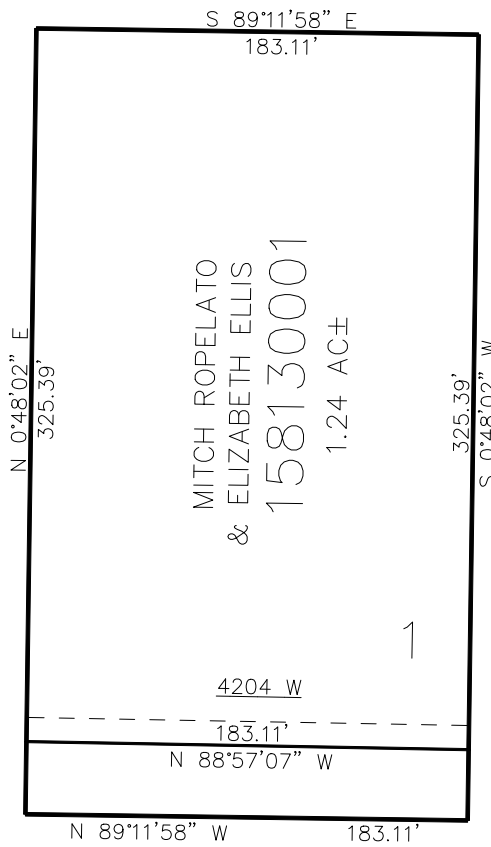
TAXING UNIT: 516

SCALE 1" = 40'

SEE PAGE 59

SEE PAGE 59

SEE PAGE 59



1400 SOUTH ST

10' UTILITY & DRAINAGE EASEMENTS EACH
SIDE OF PROPERTY LINES AS INDICATED
BY DASHED LINES EXCEPT AS OTHERWISE
SHOWN.

SEE PAGE 59

FOR COMPLETE SURVEY DATA SEE
ORIGINAL DEDICATION PLAT IN
BOOK 95, PAGE 41 OF RECORDS.